

RED

**WE DESIGN THE BUILDINGS
THAT CONNECT THE WORLD**

DATA CENTRES

CAPABILITY STATEMENT

Renowned leaders in **Data Centre design**, our **international experts** lead the market in delivering **energy efficient** and **mission critical** facilities for world-class clients.

A company of **TRACTEBEL**


ABOUT RED

As a global powerhouse of engineering design, RED has spearheaded the drive toward achieving the zero-carbon objective for two decades. Our unwavering commitment to sustainable innovation is the cornerstone of delivering transformative, commercially viable, low-carbon solutions, positioning us as industry leaders dedicated to a sustainable future.



Award Winning and International



Market Leading Technical Expertise



Trusted Advisor



Sustainable Engineering Solutions for the Built Environment



Founded in 2004



Specialist Engineering and ICT Solutions

46

Industry Awards

850+

Employees

16

Offices in Key International Cities

31

Countries with RED Projects

49

Languages



WHY CHOOSE RED?

RED's reputation is built on a foundation of unparalleled technical expertise. We're proud to boast a team of specialists at the forefront of innovative solutions. Our international presence ensures a global perspective, allowing us to address complex challenges with a diverse and inclusive approach. Client trust is paramount, earned through a track record of delivering exceptional results and maintaining an unwavering commitment to our clients' success. Moreover, our dedication to sustainability is embedded in every aspect of our work, reflecting a conscientious effort to create environmentally responsible solutions for a brighter future.



Our People
A talented team and staff retention rate of 90%+.



Repeat Business
We have long standing partnerships with our clients and a repeat business rate of 84%.



Global Delivery Strategy
Global offices provide a 24 hour working day.



Technical Ability
Digital services and in-house technologies to transform vast amounts of information into digital tools.



Growth
We have sustained year-on-year growth since 2004.



Global Network
Our offering is further complemented by our parent company, Tractebel.



OUR CORE VALUES

Our people are RED's greatest assets. Recognised for our dedication to workplace well-being, RED proudly attains "Gold" in Mind's Workplace Wellbeing Index and recently won "MEP Middle East's Wellbeing Initiative of the Year" award for our RED Wellness program. Our success hinges on the exceptional work our team delivers daily, emphasising the importance of physical and mental wellness for performance, happiness, and engagement.



We Are Bold
We dare to try.



We Are Open
We work together with collective strength.



We Are Demanding
We are always willing to go the extra mile.



We Are Caring
An environment based on trust and respect.

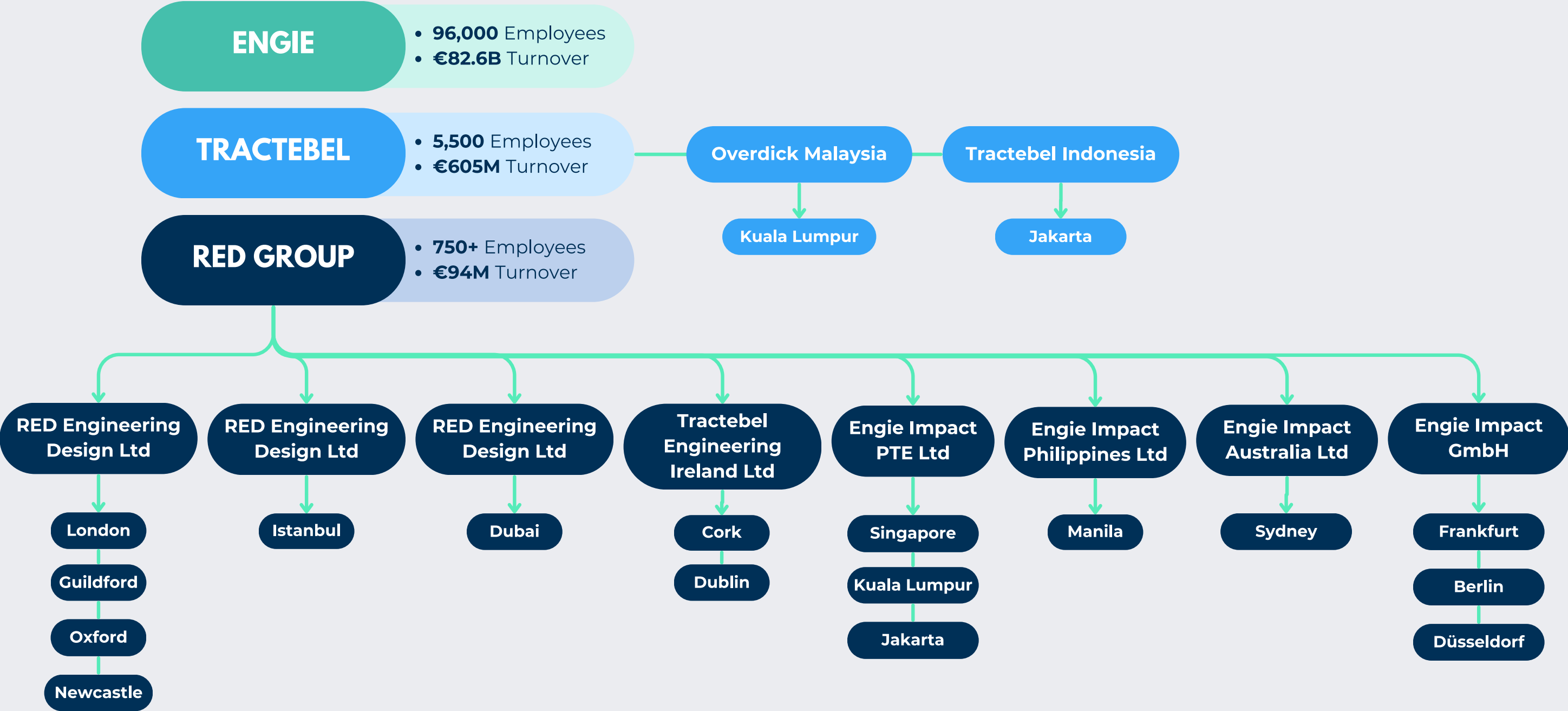


WORKPLACE WELLBEING

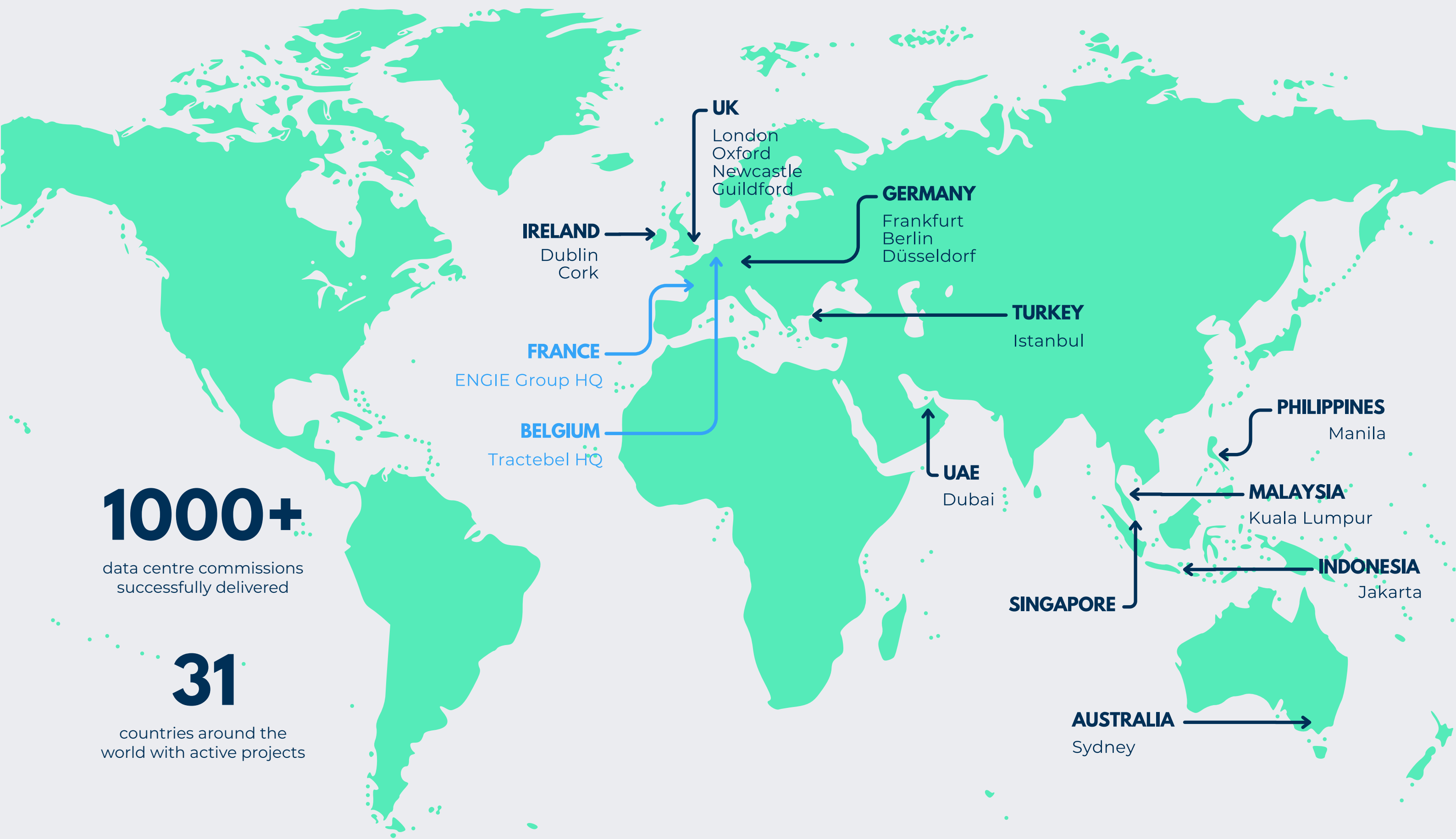
RED has been recognised for its commitment to workplace wellbeing and is proud to have achieved "Gold" in Mind's Workplace Wellbeing Index.



HOW WE OPERATE



RED'S GLOBAL PRESENCE



1000+
data centre commissions
successfully delivered

31
countries around the
world with active projects

DATA CENTRES

In an increasingly interconnected world, Data Centres have become vital hubs for businesses, housing vast amounts of data. RED stands at the forefront of innovative design, offering energy-efficient data centres and mission-critical facilities.

Cloud Services

RED has significant experience of hyperscale facility design and has positioned itself as the go-to engineering practice in EMEA for cloud providers and hyperscale operators. Our masterplan designs have improved operational efficiency across 100s of MW and allowed our clients to scale out their sites more effectively.

Managed Services

Some of the world's leading managed service providers rely on RED to provide engineering expertise to design and support their operations so that they can provide comprehensive services to their clients. Our experience across the other sub-sectors uniquely positions RED to provide a 360-degree view on resilient engineering principles. Our understanding of customer SLAs allows us to benchmark facility design and align this to the tenant's requirements.

Colocation

RED's hands on approach and flexible design solutions have allowed operators to manage growth more effectively with scalable system designs better matching the demand curve for space and load.

End User

Many of our commissions continue to come from end-users. They often have one-off and very bespoke requirements. RED's approach to these is to bring design simplicity, flexibility and efficiency to support effective operations. and look forward to continuing this trend going forward

Modular

RED has been a leader in the design of modular data centres for the last ten years. We designed the world's first Uptime Institute Tier III certified modular data centre and since then, have continued to develop our expertise in modular data centre design and innovation.

Report & Advisory

Due Diligence and Acquisition Support: RED carries out due diligence surveys, supporting investors and operators. Resilience and SPOF Reviews: Frequently RED is asked to get under the skin of a data centre and advise exactly what is there and if it falls short on the customer's requirements. Operational and FM Reviews: RED review and appraise systems, processes and teams delivering operational support and facilities management across all data centre types.



Site Selection Experience

RED have undertaken various site selection exercises where we have worked with the client's site selection team, property consultant and other professionals in assessing a large number of sites.

Our Approach

Our team have a wide range of experience of assisting clients in site selections ranging from green or brown field sites to existing industrial / warehouse building for conversion to data centre facilities.

We have undertaken these services for our clients throughout the United Kingdom, Europe, Middle East, Africa and Asia.

Our approach is to look at each site suitability to accommodate the client's requirements, this would typically involve:

- Site layout and ability to accommodate client building arrangements
- Site security risks, specific local environmental risks and security threats
- Site topology and suitability for construction of campus
- Planning, local zoning and building restrictions/permits
- Accessibility and infrastructure
- Utility availability including power, water, drainage and telecoms infrastructure

Our team would collaborate with the client site selection teams to establish programmes for surveying of the sites, establishing key contacts for all of the sites in order to gather appropriate data, information and establish key milestone dates.



HALK BANK DATA CENTRE

Turkey

Services
MEP Services

Sector
Data Centres

Period
2015

About

RED was appointed Lead Consultant for this new standalone primary Data Centre facility for Halkbank. Taking the project from initial concept design through full detailed design and into construction, with the facility being prepared for IT fit-out following IST. Uptime design and facility certification along with LEED certification was included in RED's scope.

This world-class standard facility sets a new precedent in Data Centre design for Turkey. RED's solution included 500kW of low grade waste heat being exported to the adjoining new bank campus development. Mass air free cooling (MAFC) units were designed by RED in collaboration with the air handling unit manufacturers.

The MEP infrastructure exceeds Uptime Institute Tier III standards and integrates the best practices of LEED Gold and certifications have been achieved. We're the first multi discipline Data Centre lead design consultancy in Turkey.



PROJECT HARYONO

Indonesia

Services
MEP Services

Sector
Data Centres (Colocation)

Period
2022

About

The planned project is a new Data Centre Development located in central Jakarta, Indonesia. Featuring two phased built data center structures. The IX building will host eight data halls with 1 MW capacity each, and the Hyperscale building will have eight data halls with capacities of 4.5MW for each floor.

The project's MEP design meets UPTIME Tier 3 standards, ensuring N+1 redundancy for critical systems such as chillers, CHWPs, CRAHs, and fuel pumps. The projected peak PUE stands at 1.50 including UPS Battery charging and 1.45 excluding UPS battery charging for the IX building. While, 1.46 including UPS Battery charging and 1.40 excluding UPS battery charging for the Hyperscale building, showing a strong commitment to energy efficiency.

The design phase of the project began on January 10, 2022, and ended on June 27, 2022. Construction commenced following the final design phase submission and is expected to be completed by March 2024.



FUTURE DIGITAL DATA SYSTEMS

Abu Dhabi

Services

Multi Disciplinary Design
MEP, CSA, TVRA, GeoTech, Security, Sustainability

Sector

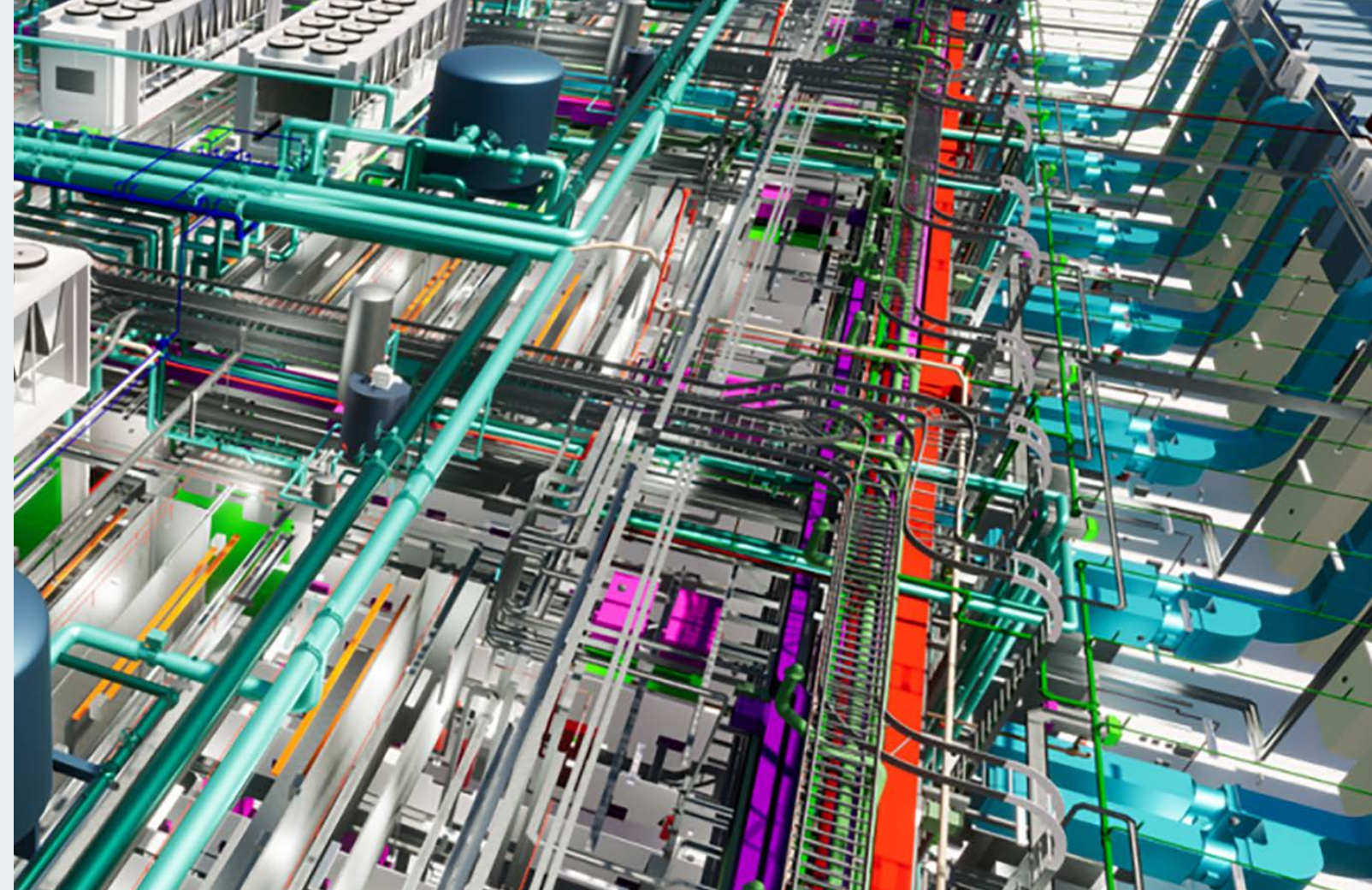
Data Centres (Colocation)

Period

October 2021 - December 2022

About

RED were appointed as Lead Designer and MEP Engineer to undertake the RIBA Stage 4 Design for this data center project in the UAE. The project comprises two data centers with a total IT capacity of 60MW and is located on a plot of land in Abu Dhabi. The planned gross floor area for all the buildings is 52,600m² and the total site area is approximately 5 Hectares. The project was delivered by our Dubai office and they worked in partnership as the leader of the project utilising Gensler and Robert Bird Group amongst others.



CONFIDENTIAL DATA CENTRE CLIENT

UAE

Services

MEP Services

Sector

Data Centres

Period

Ongoing

About

This Data Centre Project for the middle easts most prominent operator is code named DXB2, which is located in Dubai Design District. REDs engineering role is to fulfil all MEP and Specialist Services such as ICT, Security and Sustainability. The design stage lasted 6 months and we continue to provide support during the construction, testing and commissioning stages. The facility is due to go live in 2024



RED

A company of **TRACTEBEL**
ENGIE

KEY FACTS

As the world becomes more and more connected, more and more data is located in data centres, making them the virtual heart of every business.

- Over **1,000** commissions completed
- Projects from 300kW IT load to **over 480MW** IT load
- **Awarded globally** for low energy and innovative designs
- **20** Accredited Tier Designers; **1** Accredited Tier Specialist; **1** Accredited Tier Professional
- **24** Uptime Institute certifications across 16 data centres
- World's first **Uptime Institute Tier III certified** modular Data Centre
- Delivered projects using all types of **cooling & UPS technologies**
- First Uptime Institute **Tier III** and **Tier IV** certified designs outside of the US
- **UAE's first** Tier III certified Modular Data Centre Complex (MDCC)
- Designed & delivered some of the most **energy efficient** data centres in the world
- **First two** Uptime Institute Accredited Tier Designers in the UK
- Approx **10GW** of Data Centre space masterplanned across **EMEA, APAC & LATAM** in 2022
- Designed Data Centres across the **harshest of environments** -34°C to +52°C
- RED's senior management team has a combined **700+** years' experience designing Data Centres
- **CDM Principal Designer** role
- Commissioning Management (**CxM**), Client Commissioning Agent (**CxA**)
- BREEAM / LEED / WELL **accredited professionals**
- Delivery of **ICT** and **telecoms infrastructure** design packages for cloud service providers and hyperscale Data Centres

ACCREDITED TIER DESIGN

RED has 20 accredited tier designers; 1 accredited tier professional and 1 accredited tier specialist based across UK/Europe, Middle East and Asia.



We have successfully and officially designed and delivered **24 Tier certified Data centres**.

REPORT & ADVISORY

RED has a wide range of experience in report and advisory work encompassing:



Due Diligence

Due diligence reviews to ensure that 3rd party proposals are in accordance with client briefs prior to past and contractual engagement. RED has been involved in a number of due-diligence for global commercial, banking and retail clients of which many are confidential.



Development of Client Standards

Development of client standards for engineering services specific to their needs; the development of performance designs and employer's requirements for specific projects.



Sustainability/Energy Audits

Pre-planning application concept designs and sustainability reviews to compliment the environmental impact assessment and respond to the planning authority requirements for renewables.



Detailed Peer Reviews

Detailed peer reviews to ensure brief compliance at all stages from concept through to detailed design and construction phases of projects.



Condition Reports & Asset Surveys

Condition reports and asset surveys for existing facilities detailing condition of the engineering services, predicted life expectancy/ plant replacement. RED has been involved in all types of surveys in assessing energy efficiency, life cycle analysis and general condition surveys. RED worked directly with our clients



Expert Witness & Advisory Work

An example is the insurance claim associated with fire.

EXPLORING SECTORS

RED's operations are divided into several sectors to cover the cutting-edge services that we provide across the Built Environment and Data Centre markets. By seamlessly navigating various sectors, we position ourselves as a go-to partner for innovative, efficient, and sustainable engineering solutions.



Data Centres

Cloud
Colocation
End User
Managed Services
Modular



Commercial

Commercial Office
/ Mixed Use
Workplace fitout
Retail



Lifestyle

Hotels
Venues
Residential
Heritage



Life Sciences

Pharma & Biotech
Medical Devices



Transport & Aviation

Bus depots
Airport terminals
Manufacturing



Warehouse Logistics

Warehouses /
Distribution Centres
EV Infrastructure
Utility Due Diligence &
Negotiations



Public Sector

Healthcare
Government
Education
Aviation
Defence
Court Buildings



Industrial

Industrial Food &
Beverage
General Chemical
Process Plant



COMPREHENSIVE SERVICES

Adapting to client needs and the evolving environmental landscape, RED's services cover the entire life cycle of any building project. Our broad capabilities save clients time, money, and effort, addressing challenges from high-performance buildings to multi-use land developments for a more sustainable world.



MEP Services

- MEP Design
- Lead Designer
- Site Services
- Client Representative
- Life Cycle Works
- Commissioning Management



Sustainability

- Whole life Carbon assessment & reporting
- Carbon/Energy – Auditing, Modelling, Part L
- Certification - LEED, BREEAM, WELL+, NABERS, Greenmark
- Corporate Sustainability



Process Engineering

- Specialist Consultancy Services
- Specialist Expertise
- ATEX, HAZOP, Arc Flash, HV



ICT

- Strategic Consultancy
- Technical Migration and Project Management
- Critical Facilities, Infrastructure Design, Procurement and Site Services
- In-Service ICT Consultancy



Health & Safety

- CDM Principal Designer
- CDM Advisor
- Design in Safety
- Hazard and Operability Studies



Lifecycle Solutions

- Identifying and implementing plant replacement works
- Carrying out Technical Due Diligence Surveys & Reports on MEP Services

DIGITAL & VIRTUAL ENGINEERING TOOLS

RED's in-house team of industry specialists excels in modelling and R&D, transforming vast information into digital tools. Our digital services and in-house technologies pave the way for sustainable, data-driven businesses.

Digital Engineering & BIM

Integrated team of engineers, designers and BIM co-ordinators bringing true digitalisation of the design process together for project delivery.

Energy & Water Efficiency

RED's bespoke web-based app that provides climate and efficiency metrics for data centres across different locations and design configurations.

Carbon Reduction Analysis & Building Modelling

Dynamic thermal simulation tools to use real weather data and occupancy and internal heat gain profiles to predict thermal loads, energy and daylight performance.

CFD Modelling

Complex airflow, temperature and pressure distribution, modelled using leading CFD software in the data centre industry, 6SigmaDCX, in line with industry best practice.

BRIZA

RED's generic modelling tool for the flow of energy and water in complex process dominated building systems, including data centres.

Embodied Carbon and Whole life Carbon Analysis

RED utilises in-house tools to calculate, analyse, and consult on the whole-life carbon of building designs and refurbishments. This supports GLA, LEED, BREEAM approvals and wider carbon reporting for our clients.

Digital Twinning & Augmented Intelligence

Digital Twin and AI tools to uncover new resilient strategies, that not only help to shape the built environment but also reduce project environmental footprint.

Twinmotion

Digital Visualisation and rendering platform that allows us to bring to life in imagery and VR a variety of complex infrastructure designs.

Point Cloud

Point Cloud surveys are used to establish the exact dimensions of existing architecture, structure and services.

ACCREDITED & CERTIFIED

RED's professional accreditations and certifications demonstrate our industry expertise and commitment to excellence.

Global accreditation and qualifications. Our designs and people often achieved "first in class"

- Accredited Tier Designers
- Certified Data Centre Sustainability
- Professional
- Certified Data Centre Design Professional
- BREEAM Accredited - Professionals & Assessors
- ESOS Lead Energy Assessor
- LEED / WELL Build Assessor
- Low Carbon Consultants and Energy Assessors

RED's work is accurate and certified benefiting both cost and programme management

- ISO 9001 | ISO 14001 | ISO 45001 | ISO 50001 | ISO 27001 Pending
- CSCS Platinum Certified
- SSIP Accredited
- PAS 91 Compliant (Constructionline)
- Approved Safe Contractor
- BS7858 Security Cleared Personnel
- SBTi Certification Pending

HEALTH & SAFETY

RED's team of specialist engineers provides exceptional site-related services, offering unparalleled health and safety guidance during projects. With extensive expertise, we ensure a safe and secure working environment, mitigating risks and ensuring compliance with health and safety regulations for successful project execution.

We advise and assist our clients through their construction projects to ensure that they are compliant with local Health & Safety regulations.

CDM Advisor

We provide CDM advisory services, guiding clients through the construction phase of their projects. With expertise in Construction Design and Management (CDM) regulations, we offer valuable support to ensure compliance and manage health and safety risks. Our dedicated team assists clients in navigating the complexities of construction while prioritising the well-being of their workforce. By leveraging our services, clients can confidently achieve regulatory compliance and successfully complete their projects.

CDM Principal Designer

Principal Designer services within RED are led by individuals that have extensive Project/Design Management experience and offer a hands-on approach to CDM Management.

Design in Safety

We offer comprehensive Design for Safety (DfS) assessments, which aim to proactively identify and mitigate safety and health risks associated with a project. Our assessments focus on integrating good design practices during the conceptual and planning stages, ensuring optimal risk reduction.

HAZOP Review

We provide Hazard And Operability Study (HAZOP) assessments to identify potential process controls, HSE and operational problems associated with the design, construction, maintenance or operation of a project.



PROCESS ENGINEERING

RED designs for Safety, Sustainability, and Customer Satisfaction. With 30 years of experience, RED delivers safe, sustainable, and customer-centric designs that prioritize safety, flexibility, and ergonomics, from start to finish.

Health & Safety Services

RED offer a wide range of professional services, including principle consultant roles, PSDP/ PSCS (Project Supervisor Design Process/ Project Supervisor Construction Stage), and comprehensive site support throughout the construction process. With a strong focus on health and safety, our dedicated team ensures the highest standards are met, providing excellent guidance and support to ensure a secure and compliant working environment for all stakeholders involved in the project.

Consultancy Services

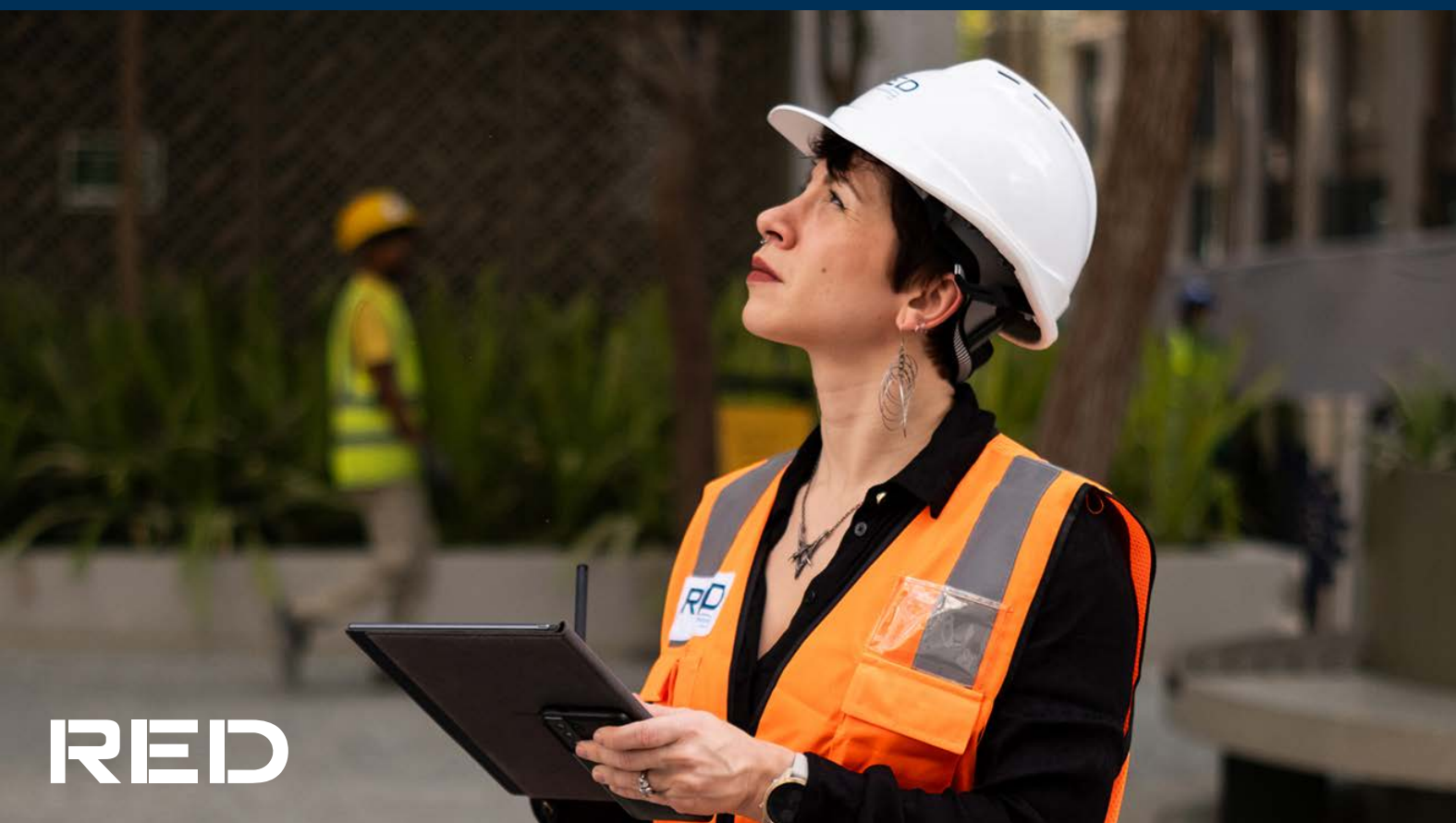
Our comprehensive range of professional services includes front-end studies, utility studies, detailed process and piping design, control instrument and electrical design, as well as mechanical design. With a team of experts, we deliver meticulous and precise engineering solutions tailored to meet the specific needs of our clients, ensuring efficient and effective project execution from inception to completion.

Specialist Consultancy Services

We provide Hazard And Operability Study (HAZOP) studies, Safety assessment, Explosion protection, ATEX Studies, Commissioning and validation to handover, Planning, project lifecycle, piping stress analyses and environmental.

Specialist Expertise

We possess extensive expertise in various areas, including pressure relief devices, process utilities, and parenteral manufacturing. Their proficiency extends to the design of critical pharmaceutical components such as vials, lyospheres, cartridges, oral solid dosage forms, and API containment systems. Additionally, they excel in the intricacies of clean room design, ensuring the creation of controlled environments that adhere to stringent industry standards.



MEP SERVICES

Mechanical, Electrical, and Plumbing services (MEP) are vital in complex buildings, ensuring functionality, safety, and comfort.

Integrating MEP services efficiently is crucial in complex structures for building functionality, occupant comfort, and safety. From high-performance buildings to multiple land use developments, RED applies leading-edge tools to provide innovative MEP solutions.

Building Services

Core engineering design consultancy with specific expertise from advisory, through the various stages of design, construction support and commissioning. We collaborate with clients, design teams developers and main contractors to deliver high- performance and sustainable buildings.

Lead Designer

We engage with our trusted specialist providers to provide full design duties for all disciplines including civil, structural and architectural services along with telecoms, security and local consultants. All in addition to our core MEP services.

Commissioning Management

Structured and comprehensive pre-commissioning and formal commissioning effort to ensure quality throughout the project.

Client Representative

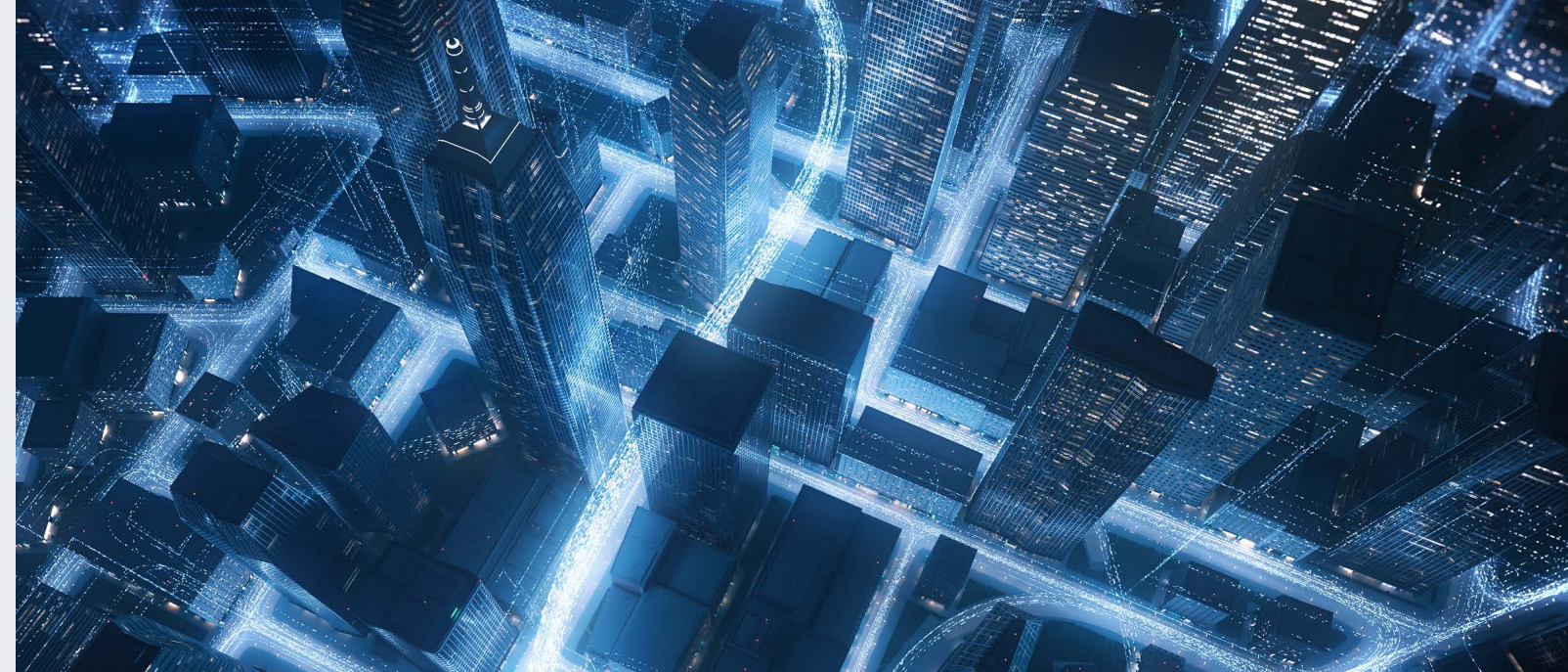
Technical project management services from concept stage to handover. Supporting clients with Technical reviews, programme advice, procurement advice, progress monitoring, quality control and witness testing.

Life Cycle Works

Undertaking the site surveys, condition reports, MEP design, construction support and commissioning of plant upgrades within live facilities.

Site Services

Site services within mission critical buildings and data centre facilities. This includes due diligence audits, site investigations, SPOF analysis, condition reports and Net Zero intervention works.



ICT

RED delivers excellent ICT services by integrating enterprise technology architecture, ensuring seamless connectivity and optimised systems for today's digital landscape.

Our design standards meet growing user expectations, maintaining high service levels and information availability. We create operational networks that cater to diverse needs, from public to corporate domains. Our designs support cloud, social networking, and mobile collaboration in the digital economy.

Strategic Consultancy

Whether a building scheme or a large campus capital development project; the RED ICT consultancy team engage with the key project stakeholders to ensure that the technical architecture strategy is future-proofed to reflect the demands of today's connected economy, to delivery mobility and continuous connectivity with on-line information resources.

Critical Facilities, Infrastructure Design, Procurement and Site Services

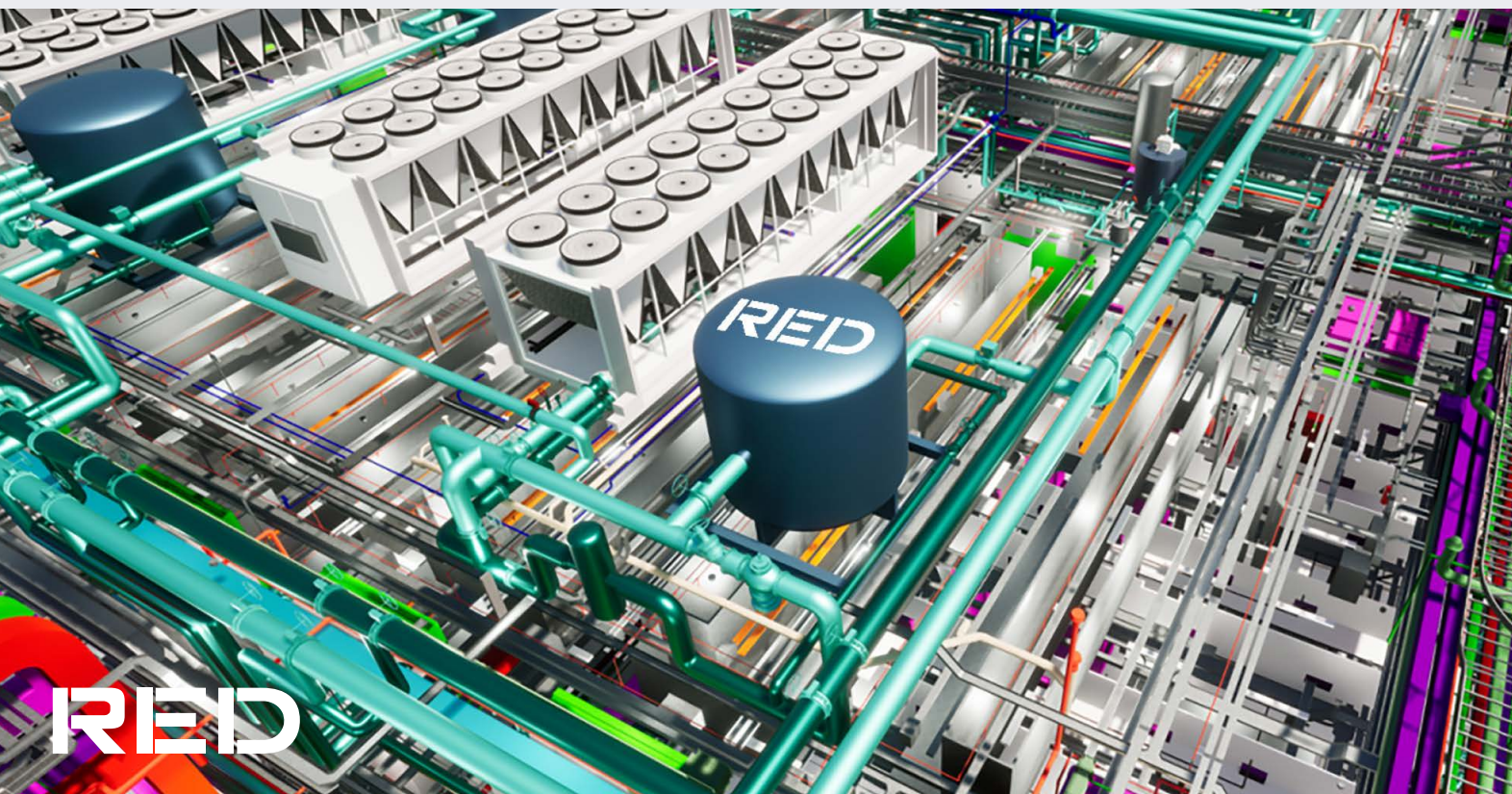
We deliver technical excellence often in demanding project conditions. Centred upon ICT and telecommunication infrastructure; we provide a complete range of project lifecycle consultancy services from initial requirements brief through detailed 2D/3D drawings and technical design specifications to supply chain consultancy and commissioning management services.

Technical Migration & Project Management

We partner with client ICT service management teams to plan and execute the seamless migration of ICT resources to support system upgrade and premises relocation. Our professional services include project budgeting, procurement consultancy and employers representative in resident engineering and commissioning management.

In Service ICT Consultancy

Operators and investors are increasingly focussed upon continuous improvement in operational efficiency. We provide a range of resident engineering technical review services associated with converged IP data network operational performance. Project examples include technology asset audits, ICT equipment performance review, DC facilities audit, risk & resilience review, network security assessment, SLA alignment.



RED



LIFECYCLE SOLUTIONS

The specialist services team within RED has a team of individuals that specialise in identifying and implementing plant replacement works within existing building.

Key Facts

Subject Matter Experts: Extensive design resource and R&D team with experts in key systems/equipment.

Practical approach to design: Hands-on approach to design and implementation with engineers that have practical site experience.

Safety by Design expertise: CDM experts undertake safety in design reviews as part of internal QA Technical review process.

Commissioning expertise: Commissioning experts undertake commissioning reviews on designs as part of QA Technical review process.

Dynamic implementation: Use of digital & virtual engineering tools alongside our design office in Manila ensures an efficient delivery model.

Typical scope of services includes:

- MEP design packages
- Feasibility reports
- Condition reports
- Site validations
- Life-cycle costing studies
- Low carbon technology studies
- Plant replacement strategies
- Buildability / phasing methodology advice
- Planning / programmes
- Energy and carbon assessments
- Project risk analysis

FOCUS ON SUSTAINABILITY

RED's Sustainability Solutions & Climate Change team delivers comprehensive sustainability analysis, compliance, certification, reporting, and strategy services. Aligned with IPCC's 1.5C global temperature increase target (2032), we guide clients in adjusting project parameters for environmental resilience, flexibility, and compliance with evolving



Sustainability Audits

The first step in any client's ambitions to reduce energy & carbon. Our audits vary in scope and are tailored to provide outputs to match clients reporting needs with GRESB, CRREM, UKGBC, ISO 50001, TCFD etc formatting.



Green Energy

RED's mission is to accelerate sustainable transformation with outcomes such as zero carbon, and we have extensive experience in Green Hydrogen, Wind, Solar, Geothermal & Biomass/ Bio Fuel.



impACT Consultancy

Aligned with the RIBA Plan of work Green Overlay & BSRIA BG6, our services are tailored to provide clients with a clear understanding of their projects' environmental impact and the actions they can take to make that impact as positive as possible.



Certifications

RED offers BREEAM Advisory Professional and consultancy services and works with clients to develop cost-effective strategies to meet planning requirements, providing support through to final certification. We also offer NABERS, LEED and WELL building standard consultancy.



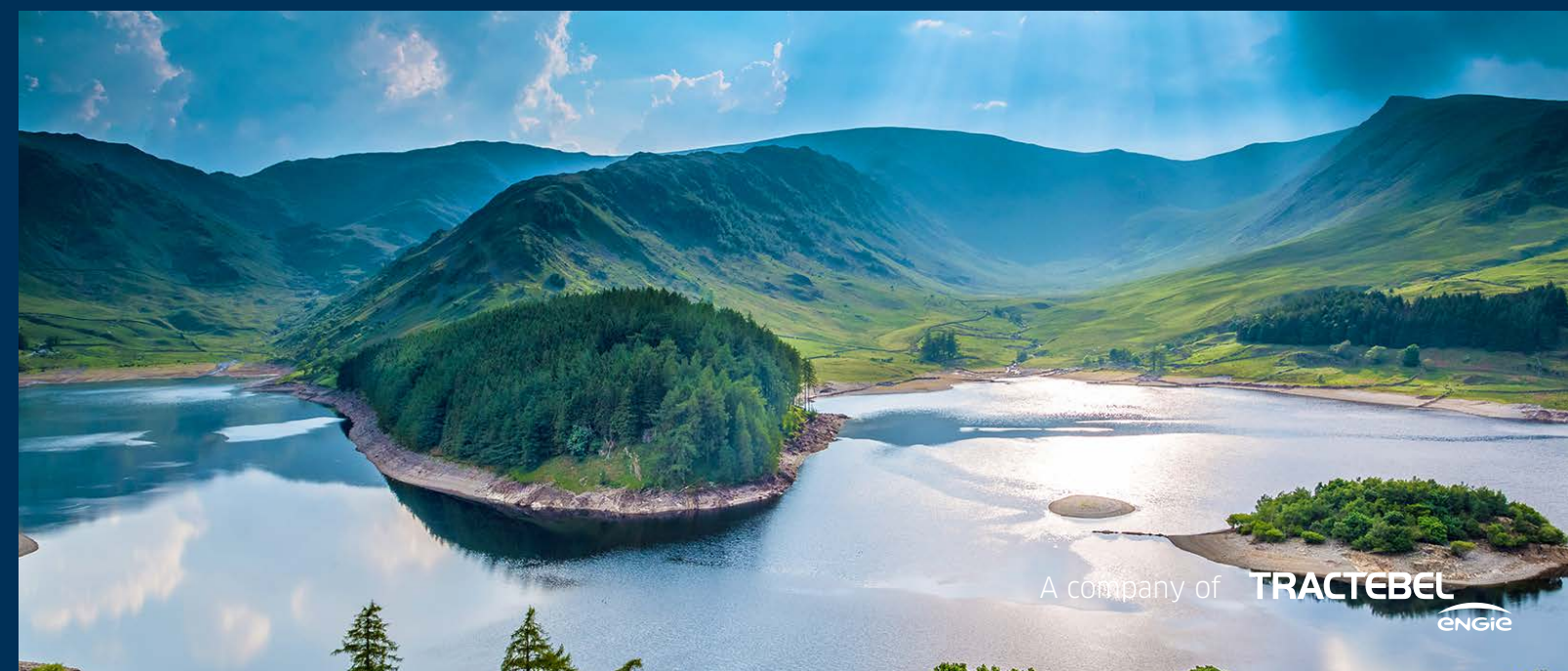
Embodied Carbon – Life Cycle Assessments

Material & Equipment Embodied carbon studies including quantification and improvement studies to feed into project life cycle assessments.



Sustainability Regulation Compliance

Part L compliance. EPC assessments. ISO 50001 Planning Assessments. Planning Energy Statements. IES Modelling.



RECOGNISED BY THE INDUSTRY

RED's success can be measured by the repeat business from blue chip organisations and having won awards for our sustainable engineering and innovation, often beating off long-established competitors in the process.

IN 2024

- GOLD AWARD RECOGNITION:** WORKPLACE WELLBEING, MIND Index 2023/24
- WINNER:** YOUNG CONSULTING ENGINEER OF THE YEAR (MECHANICAL), Syeh Hafiz, ACES Awards 2024
- WINNER:** TOP 50 WOMEN IN ENGINEERING, Maira Bana, WE50 Awards 2024
- HIGHLY COMMENDED:** ELECTRICAL ENGINEER OF THE YEAR, Sarah Hussain Zahidi, Middle East MEP Awards 2024
- WINNER:** SIR AWARD FOR OUTSTANDING CONTRIBUTION TO STEM EDUCATION NE, Diana Kenny, STEM Hub 2024
- WINNER:** MOST INSPIRATIONAL NORTH EAST ENGINEERING EMPLOYER, RED Engineering Design, STEM Hub 2024
- WINNER:** MEP YOUNG ENGINEER OF THE YEAR, Takwa Dawdi, CIBSE UAE 2024
- WINNER:** MANUFACTURING ENGINEERING PROJECT OF THE YEAR, RED Ireland, Engineering Excellence Awards 2024

- WINNER:** MECHANICAL ENGINEER OF THE YEAR, Esteban Castro, **CIBSE UAE Awards 2023**
- WINNER:** ELECTRICAL ENGINEER OF THE YEAR, Sarah Hussain Zahidi, **CIBSE Awards 2023**
- WINNER:** HIGHLY RECOMMENDED AWARD, Roshan Patel, **CIBSE Awards 2023**
- WINNER:** YOUNG MISSION CRITICAL ENGINEER OF THE YEAR, Alex Doey, **DCD Awards 2023**
- WINNER:** EMPLOYEE WELLNESS INITIATIVE OF THE YEAR, Middle East **MEP Awards 2023**
- WINNER:** YOUNG ENGINEER OF THE YEAR, Takwa Dawdi, Middle East **MEP Awards 2023**
- WINNER:** RISING STAR AWARD, Taya Williams, **Women into Construction CIC 2023**

And more!



KEEP IN TOUCH

For more information about RED, please contact:

APAC

Singapore	singapore@red-eng.com	+65 6226 3106
Manila	manila@red-eng.com	+63 2 7950 90 16/7

EMEA

Dubai	dubai@red-eng.com	+971 4 297 8846
Dublin	dublin@red-eng.com	+353 1 661 4420
Cork	dublin@red-eng.com	+353 21 242 8685
Guildford	guildford@red-eng.com	+44 20 7299 8260
London	london@red-eng.com	+44 20 7299 8260
Newcastle	newcastle@red-eng.com	+44 191 500 3140
Oxford	oxford@red-eng.com	+44 1869 355 600
Istanbul	istanbul@red-eng.com	+90 212 211 9914
Berlin	germany@red-eng.com	+44 20 7299 8260
Düsseldorf	germany@red-eng.com	+44 20 7299 8260
Frankfurt	germany@red-eng.com	+44 20 7299 8260

RED-ENG.COM



red-engineering



RedEngineeringDesign



red_engineering_design

RED

A company of **TRACTEBEL**
ENGIE

Market-leading Engineering Design consultancy
**specialising in the Built Environment, Data Centres,
ICT and Sustainability.**